

It is expected that in every sense the building will itself be on exhibition from its very inception. The building will be a focus of interest and inspiration within the campus and beyond as an event and exhibition space and exemplar of the interactive process of design and learning.



SEVERAL PROJECTS

Soi 53 Apartments, Bangkok, Thailand



The Lalu, Nantou, Taiwan



Desert Palm, Dubai, UAE



Masterplan Model Showing Green Spine



Verandah



Library



Main Entrance and Verandah



Construction Progress



Main Section

Built Pedagogy

The distinction from other campus buildings and faculties will be in the ability to display and exhibit past, present and future outputs of students and staff. Such a place will invite visitation by all, challenging the singularity, enclosure and 'walled' composition of the traditional campus form.

The built form needs to support interactive and collaborative learning models and be responsive to the organisational aspirations of the faculty. An inherent flexibility and agility in the form is anticipated to enable the building to adapt to inevitable change. The notion of building as exhibition is anticipated to extend to the ability to view formal and informal learning and teaching activities, and visible sustainable systems.

Fundamentally the building needs to provide an environment for staff and students that facilitates learning, socialising, research and display to the extent that it is inconceivable these activities will occur elsewhere.

In any strong design solution, there lies a need to contextualize, examine, evaluate and research a suitable design. In the illustrated projects, the work of the practice is demonstrated in places sometimes unlike Melbourne, but which show our approach in seeking and providing a successful and appropriate design solution.

UNIVERSITY OF NSW ASIA, Singapore

KHA won a prequalified design competition in 2005 for the first foreign university campus to be built in Singapore, and the only overseas campus for UNSW. The competition included the master-plan and design of the main academic teaching buildings and library.

Located in the east of Singapore, the campus was conceived as an urban tropical park, within densely built-up Singapore. The introduction of primary and secondary forest valleys provided a spine to the organisation of the site.

Water, open verandahs, wide roof overhangs, and naturally ventilated loggia informed the design, and allowed the development of an architectural parti which responded successfully to the brief. The resultant light, open, shaded and transparency between building layers further contrast against the more severe campus architecture prevalent in the country, and which the Client wished to distance itself from through design.

UNSW decided not to continue with the project in 2007, following full site preparation, advance planting, piling works and tendering of the main buildings.

STATE THEATRE CENTRE, Perth, W.A

This project is the result of a 2-tier international design competition, won by KHA in 2005. The centre will open in 2010.

Key to the successful planning of the scheme are the following factors:

- 2 theatres are stacked to provide the possibility of opening up the site with a major courtyard, as a bonus space, and to introduce a laneway to the Perth cultural precinct.
- The entrance (illustrated) reinforces the precincts urban corner, bookending the declining heritage street facades & awnings.
- A verandah element is introduced, on the southern façade, to suggest a former hotel building, long demolished, and to thereby reinforce this streetscape.
- To celebrate the theatre, the rectilinear box of the fly-tower is clad in illuminating glass sheeting; signaling, identifying & announcing the theatre in the locale.



The academic environment is one which depends upon quality of place and adequacy of resources. It needs to be tailored to individual academic pursuits and interests, recognising that the expectations of each will vary, within the broader collegiate model.



The main entrance to the campus and Library



Section through the Library, teaching space and verandah

space that allows students to manage the social dimensions of learning...



Campus overview



Main buildings and water court



Parade square

The design response needs to consider hierarchies, levels of security, difference between academic and operational staff needs. The expectation is that staff spaces will evolve around a model of controlled permeability of filters and boundaries within the design that move from the informal public space interaction with peers and students to a semi-public, privileged and ultimately private personalised spaces where focused research and writing can occur. The design needs to enable and encourage spontaneous, active student to staff and peer interaction. This is illustrated in the examples below.

Importantly the building must facilitate academics to engage with peers, profession and the public beyond the bricks and mortar of the campus through physical and virtual means.

UNIVERSITY OF NSW ASIA, Singapore

KHA responded to the brief through the introduction of a sense of transparency between academic buildings, segmented by layers of landscape. Height and a sense of volume were employed in the reading room and Library stacks further increasing visual interaction between learning and research spaces.

Social spaces were anchored by the large open verandah which focused the campus with a light, breezy canopy, replacing the conventional temperate climate campus lawn or union. The verandah shields campus users from the tropical rain and sun. The verandah also houses informal eating, retail and gathering spaces, while remaining the main circulation within the campus; connecting to teaching facilities, laboratories and lecture theatres, and to the transport infrastructure of the locale.

ROYAL MILITARY ACADEMY, Jordan

KHA is currently developing the design of a new military academy in Jordan. The campus will be located north of the capital, Amman in a 100 Ha site. The program accommodates extensive educational, training, residential and cultural facilities for three battalions. Students are to be drawn from throughout the region, and range from post graduate cadets to officers of all ranks. Facilities also included are a cultural centre and 700 seat theatre, a mosque, a military museum, comprehensive indoor and outdoor sporting facilities, and housing for 1200 students and staff.

RMIT BUILDING 13, Melbourne Graduate School of Business

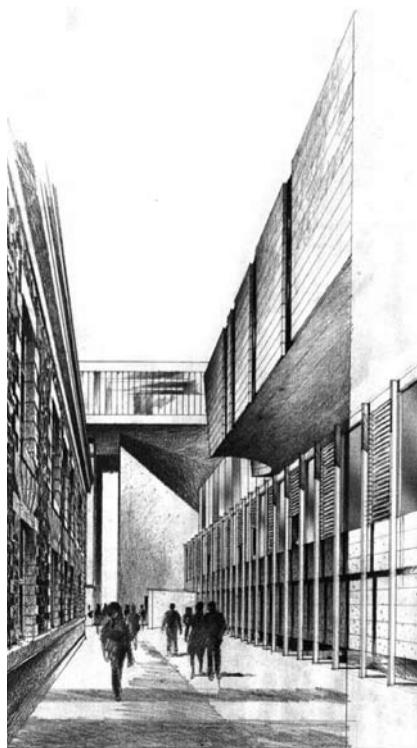
Lovell Chen designed and is currently managing the complex adaptation of the Emily McPherson College, RMIT University's Building 13, a neoclassical structure built as the School of Domestic Economy in 1926. The building is being transformed into a next generation collaborative learning environment housing two lecture theatres, five classrooms, a multi-purpose hall and an informal student lounge. The building's new use will be most evident from the rear, which will be reconfigured to include a glazed 'street' at ground level, with new lecture theatres above and below.



Neoclassical facade



East Facade



Glazed street

NEW BUILDING FOR THE FACULTY OF ARCHITECTURE, BUILDING AND PLANNING, THE UNIVERSITY OF MELBOURNE



The teaching and learning environment is one which must recognise and accommodate the dynamic quality of that environment and the predisposition to change. The design of that environment is one which should not only be informed by internal influences but is also one which should explore the expectations of practitioners, both local and overseas, in each of the disciplines.



adaptable like a theatre



Amman Studio Theatre

The ability to experiment, collaborate, test out propositions, workshop, display, critique, construct and research must be a primary objective of the studio. This needs to be supported by a sophisticated layer of computer technology. The aspirations will be tempered by many realities. Class sizes, student:staff ratios, programming, variable intakes and funding/endowments will all remain as key determinants.

As practicing Architects we understand these realities as we work and partially live in a design studio. Architecture and design for us is not just a business, but an activity where learning is ongoing, as new frontiers are encountered, boundaries are pushed, solutions explored, mistakes made and lessons learnt in the pursuit of design excellence. Experimentation abounds, quiet thought and research takes place, collaborative learning is practised, the architectural world is explored and socializing takes place all within our practice walls.

The following projects exhibit some of the types of spaces we may encounter in the design of the new faculty. The references may be somewhat tangential, but we believe are relevant;



Show gallery internal view



Show gallery verandah



Show gallery external view

- Studio Theatre and Rehearsal Spaces, King Abdullah II Centre for the Performing Arts, Amman, Jordan (competition). The studio theatre can be combined with the rehearsal room which allows variation and flexibility, and facilitates student improvisation.

- Show gallery for an apartment project in Singapore. Here raw finishes, clarity of space, and a sense of drama enliven architects models on display. The space also exhibits proposals for the sun-screening of the eventual building, its materials, and its atmosphere.

- The Library, University of NSW Asia, Singapore.

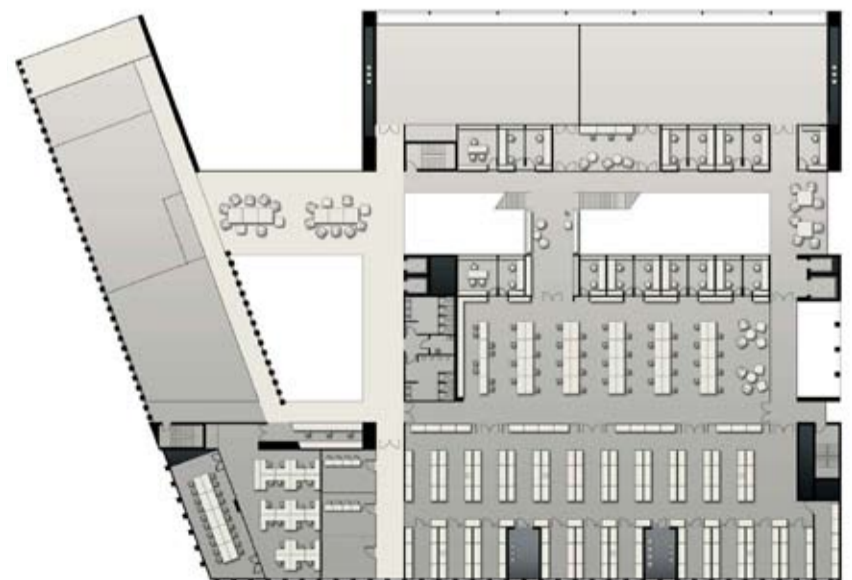
- KHA are currently working on a design competition for the new Energy Technology Building of UNSW in Sydney. In terms of planning, teaching, laboratory and lecturers offices have been arranged so that each level is interactive and enlivened. Varied façade treatments deal with sun and aspect.

within the arrangement of transparent walls, screens and courtyards, boundaries of inside/outside, library/campus are dissolved

agility + robustness in studio spaces



The Library, UNSW Asia, Singapore



Energy Technology Building, UNSW, Sydney (competition entry)

NEW BUILDING FOR THE FACULTY OF ARCHITECTURE, BUILDING AND PLANNING, THE UNIVERSITY OF MELBOURNE



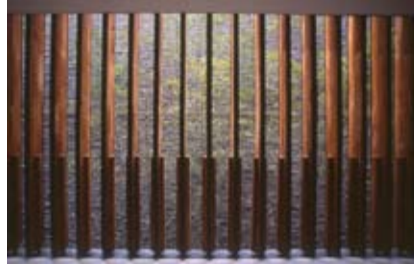
The expectations of the living building moves the place beyond the norm. The place as a research organism able to be changed; to be experimented with. The base build would act as an armature; organised, orientated and fabricated in a manner which responds to the expectation of change and adaptation.



COURTYARDS OGILVIE HOUSE, Sunshine Coast



THE LALU, Nantou, Taiwan



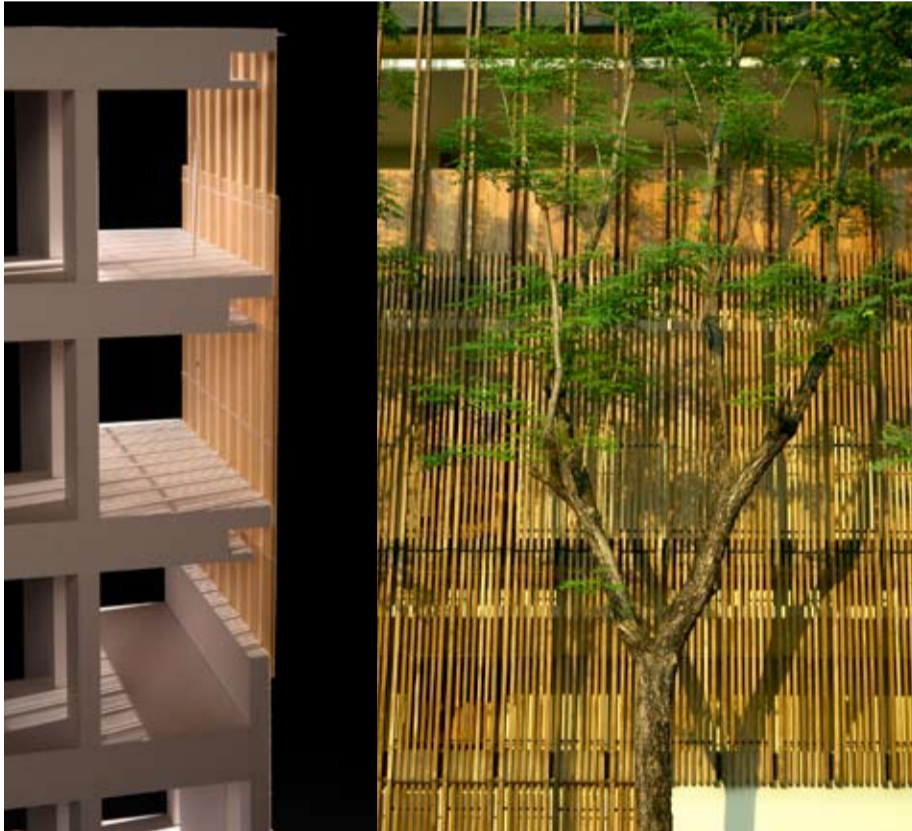
THE LALU, Nantou, Taiwan

Environmental initiatives would respond to current thinking recognising that the area is one of exploration and change. Building systems – maintenance and monitoring – will be a key deliverable in maximising the operating environmental response. Balancing whole of building environmental management with the desire to deliver personalised environments will be a major challenge. Part of the Living Building equation will be the reuse or recycling of materials which are a reality of the existing site.

KHA has consistently utilized strategic design elements to minimise energy use and maximise building user engagement with their environment. These include the use of;

- Cross ventilation
- Operable and fixed sun screening
- Courtyards
- Sky gardens
- Light wells

Further technological advancement through the use of solar light tubes, photovoltaics, solar chimneys, thermal labyrinths and low energy glazing systems have been adopted in a current design for the Energy Technology Building at UNSW, Sydney. These are illustrated in the sketch below.



SUN SHADING THE CHEDI, Chiangmai, Thailand



THE GENESIS, Singapore



THE GENESIS, Singapore

In the State Theatre Centre in Perth a number of innovative ESD initiatives were adopted during the design process including;

- stack ventilation to naturally ventilate the foyers
- pre-conditioning of outside air through a thermal labyrinth to significantly reduce the energy used in the mechanical ventilation systems.

ESD related benchmarks achieved by the Practice include;

- 2008 HIA LandCorp GreenSmart Design Concept Award, 2008 (Beachside Apartments, Perth, WA).
- The Building and Construction Authority of Singapore Green Mark Gold Awards, 2008, Silver Tower & Hullet Road Apartment Buildings, Singapore.

GREEN ROOF

Reduce reflective roof surface to reduce Urban Heat Island Effect. Detaining storm water in soil profile & reducing peak-flow rates for storm water system. The insulation layer reduces heating & cooling loads. Provides opportunity for biodiversity.



SOLAR TROUGH COLLECTOR

Solar thermal trough collector array located on the southern roof to generate high temperature hot water for space heating



CHILLED BEAMS

Chilled beam technology provided to enclosed areas in southern block which requires temperature control.

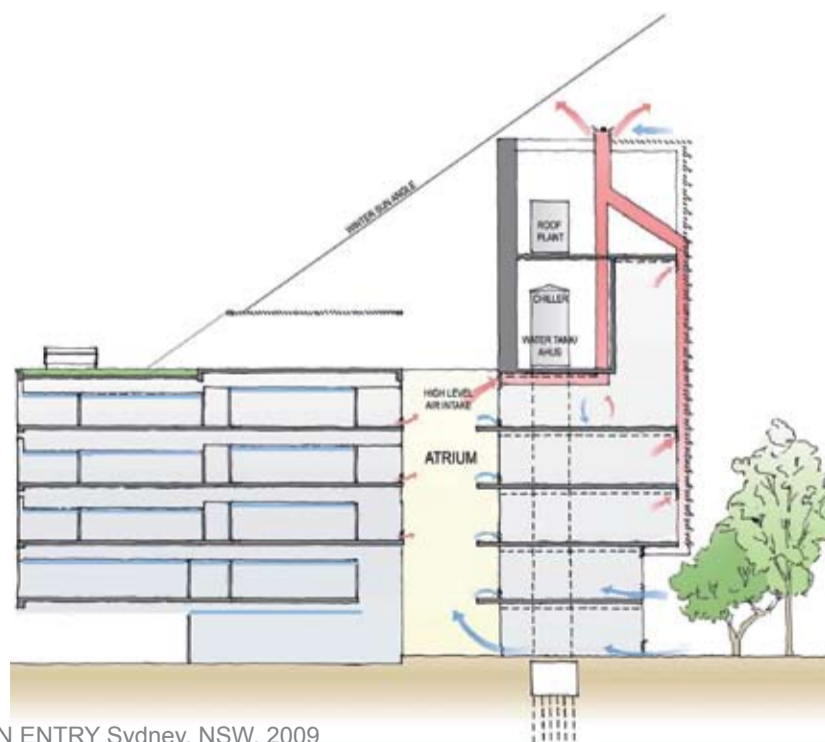


BUILT FORM ORIENTATION

The northern facade is protected by louvres; preserving transparency & daylight penetration

UNSW ENERGY TECHNOLOGY BUILDING COMPETITION ENTRY Sydney, NSW. 2009

ADVANCED SYSTEMS TO MINIMISE ENERGY CONSUMPTION



WIND/SOLAR CHIMNEY

Collect and convert radiant thermal energy to convective energy to drive the ventilation system when in mixed mode operation. The main driving force for higher ventilation rates will be wind power.



PHOTOVOLTAIC PANELS

Facade integrates available Photo Voltaic modules with off the shelf louvres to create a power generating sunscreen

INDIRECT LIGHT

Extensive day lighting from skylights above the atrium.

GROUND WATER LOOP

No roof rejection plant
Site has high water table- Constant ground temperature for heat exchange
Summer- exchange heat to ground from chilled beams.
Winter-exchange coolth to ground. Heating systems water for outdoor air system. Cost efficiency increased by loop installation with piling.

**BIO LOUVRES
LOW LEVEL
AIR INTAKE**



Kerry Hill Architects is a Singapore based planning, architecture and interior design practice founded in 1979. The practice has three Partners and five Associates and has offices in Singapore and Perth.

The Singapore office has 30 staff members, of whom 18 are architects and 3 are qualified interior designers. The Perth office employs 20 staff of whom 10 are architects and 4 are qualified interior designers.

The two offices work interactively ensuring the active involvement of all Partners and Associates in the work of the Practice. The Perth office is currently working on projects on both the west and east coasts of Australia, which represents approximately 40% of the combined workload of the Practice.

The practice has commissions in many countries, ranging from Australia, North and South Asia, Europe, and India. This presents a unique set of challenges that requires effective communication and a high standard of project documentation for the delivery of architectural services. This involves collaboration with other Architectural practices in varying degrees of involvement and expertise.

This experience has provided the practice with the ability to develop a method of project delivery that has achieved buildings of the highest standard. This is demonstrated in the numerous architectural awards that the office has received, including the Aga Khan Award for Architecture in 2001, and the award of the RIAA Gold Medal to Kerry Hill in 2006.

Kerry Hill Architects operates as the lead consultant for all of its projects.

Lovell Chen is a Melbourne based contemporary architectural practice with more than 25 years' experience in design and heritage. The multidisciplinary team it employs is unique in the field, combining architects and designers with historians, researchers, materials experts and a range of other specialists in aspects of our built environment.

The approach of the practice is both analytical and responsive across a full range of project types: it considers heritage to be both inspirational and dynamic, and strives to create new work in the context of understanding a place and its values.

Well known for its singular expertise in conservation and restoration of significant heritage places, Lovell Chen is equally committed to sensitive and compatible contemporary development, aiming to create a meaningful resonance between the past and the present.

The practice was established in 1981 as Allom Lovell & Associates.

The design team will be led by Kerry Hill Architects from the Singapore office and will be led by Kerry Hill at all stages of the project until completion. Architectural Conservation and approvals aspects of the project will be led by Lovell Chen and the two practices will work interactively to produce a unique response to the brief.

A dedicated project team will be established in the Melbourne office of Lovell Chen for the duration of the project delivery. This team will be led by a senior experienced Project Architect under the employment of KHA, supported by an appropriate team of Architects and Interior Designers from both offices.

The team will recommend other Melbourne based consultants of the highest calibre to the University for consideration. This will include well regarded ESD, engineering and acoustics consultants, a Lighting Designer and Landscape Architect, all of whom will inform the competition phase design proposal and subsequent project delivery stages.

The visual arts will have an important role to play in a school of design, and may inform the design process further. The team is experienced with interaction with Artists, identification of spaces and opportunities for the commissioning of specific works for the building.

Engagement and Collaboration

Collaboration with the clients and users would be conducted formally through the Project Control Group established for the project.

During the process of brief development the team will engage with faculty staff and students, the broader campus, practitioners in the faculty disciplines and the broader University community. Engagement will include individual and group inputs by way of meetings and workshops. The focus would be on the refinement of the brief such that it reflects current and anticipated thinking about the teaching, research and learning in the diverse disciplines offered by the faculty. Importantly it will ensure that new spatial and design aspirations are hand-in-hand by the organisational and academic programme to achieve a building that the occupants are eager to occupy and use.

The design team would be structured around the leadership team made up of the core disciplines of architect, structural engineer, services/environmental engineer and cost planner.

Exhibition of the design and work in progress would be encouraged to inform the Faculty and student body of the process. In addition to the consultation outlined above this process would primarily occur by way of a project website. The site would have levels of access and interaction. The site would be set up in a manner which reflects faculty disciplines and enables staff and students to engage with the process.

NEW BUILDING FOR THE FACULTY OF ARCHITECTURE, BUILDING AND PLANNING, THE UNIVERSITY OF MELBOURNE



PERFORMING ARTS CENTRE, Amman



OLD TREASURY BUILDING, Perth



"BEACHSIDE" APARTMENTS, Perth



SINGAPORE ZOO ENTRANCE



THE AMAN, New Delhi



THE CHEDI, Chiangmai



MARTIN 38 APARTMENTS, Singapore

Client references

Mr Adrian Zecha, Chairman, Amanresorts International
email: jwalters@amanresorts.com
[for The Aman, New Delhi]

Mr Bruno Zambotti, Manager Agency Specific Projects, Building Management & Works
email: Bruno.Zambotti@bmw.wa.gov.au
[for the State Theatre Centre of Western Australia]

Mr Graham Parry, Deputy Director Facilities Management, UNSW (retired)
email: Graham.parry@unswalumni.com
[for UNSW Asia, Singapore]

Selected Works: Kerry Hill Architects

project costs are approximated in AUD

Education	
University of NSW Asia	Singapore. 2008
Masterplan, Library, Teaching	
75 Ha	AUD \$170 million
International Competition	
Performing arts and auditoria	
State Theatre Centre	Perth, WA. 2009
11,000 m ²	AUD \$75 million
International Competition	
Performing Arts Centre	Amman, Jordan. 2008
12,000 m ²	AUD \$75 million
International Competition entry	
Mixed use developments	
Old Treasury Building	Perth, WA. 2008
Apartments & Hotel	
36,250 m ²	AUD \$274 million
Invited submission with MIRVAC & CBUS	
Beachside Apts and Hotel	Perth, WA. 2009
Masterplan, Apts & Hotel	
30,295 m ²	AUD \$ 200 million
Under Construction	
Recreational Facilities	
Singapore Zoo Entrance	Singapore. 2003
2,300 m ²	AUD \$ 2.7 million
Commission	
Hotels	
The Aman, New Delhi	New Delhi, India. 2009
40,000 m ²	AUD \$ 110 million
Commission	
The Lalu	Nantou, Taiwan. 2002
22,500 m ²	USD \$75 million
Commission	
The Chedi	Chiangmai, Thailand. 2005
20,160 m ²	AUD \$38 million
Commission	
ITC Sonar Bangla	Calcutta, India. 2003
35,400 m ²	AUD \$75 million
Commission	
Residential	
Martin No 38 Apartments	Singapore. 2010
12,600 m ²	AUD \$60 million
Commission	

Selected University Works: Lovell Chen

University of Melbourne	
1888 Building	Melbourne, 1996
Conservation, Adaptation, Teaching and Hospitality	AUD \$13million
Beaurepaire Centre	Melbourne, 2006
Conservation, Adaptation, Health and Fitness	AUD \$6million
Stonework - Old Quad	Melbourne, 2007
Conservation	AUD \$12million
Grainger Museum	Melbourne, 2009-
Conservation, Adaptation, Teaching, Museum and Hospitality	AUD \$2million
Boat Club	Melbourne, 2009-
Conservation, Adaptation, Health and Fitness	AUD \$2million
Land Use Plan	Melbourne, 2009-
Heritage and Master Planning	
RMIT University	
Graduate School of Business	Melbourne, 2009-
Conservation, Adaptation, Teaching	AUD \$26million
Storey Hall - Stonework	Melbourne, 1995-
Conservation	AUD \$6million



Kerry Hill Architects

Awards

RAIA: Gold Medal - Kerry Hill, 2006

The Aga Khan Foundation

2001 The Aga Khan Award The Datai, Langkawi

RAIA: National Awards

2006 The International Award Commendation
Soi 53 Apartments, Bangkok
2006 The International Award
ITC Sonar Bangla, Calcutta
2003 The Robin Boyd Award
1998 Commendation,
Ogilvie House, Sunshine Coast
The Robin Boyd Award
1997 The International Award
1994 The International Award
1993 The International Award
1990 The Presidents Award
Ooi House, Margaret River
Genesis, Bukit Timah Rd, S'pore.
The Datai, Langkawi, Malaysia.
Amanusa, Bali, Indonesia.
Port Office Building, Brisbane

RAIA: State Awards

2003 The Robin Dods Award for Residential Bldgs- Qld Chapter
2003 Individual House Award for Residential Bldgs- Qld Chapter
2003 Regional Commendation & Building of the Year Award
1998 Award of Merit- WA Chapter
1991 The Commercial Award- Qld Chapter
1990 The Heritage Award for Bldg conservation- Qld Chapter
Ogilvie House, Sunshine Coast
Ogilvie House, Sunshine Coast.
Ogilvie House, Sunshine Coast
Ooi House, Margaret River .
Heritage Hotel, Brisbane.
Port Office Building, Brisbane.

The Singapore Institute of Architects Design Awards

2008 Design Award Chedi, Chiang Mai, Thailand
2006 Design Award Soi 53 Apts, Bangkok, Thailand
2006 Honourable Mention Garlick Ave House, Singapore
2004 Honourable Mention S'pore Zoo Entrance
2001 Design Award S'pore Cricket Assoc. Pavilion
1998 Design Award Ooi House, Western Australia
1998 Honourable Mention Genesis, Singapore
1996 SIA-ICI Interior D. Colour Award Visa International, Singapore
1995 Design Merit Award The Chedi, Bandung, Indonesia.
1995 Honourable Mention The Datai, Langkawi, Malaysia.
1992 Honourable Mention 8 King Albert Park, Singapore.
1992 Honourable Mention The Beaufort, Singapore.
1987 Design Merit Award The Darwin Centre, Darwin.

The Kenneth F Brown Asia Pacific Culture and Architecture Design Award, Hawaii, USA

2002 Honorable Mention The Lalu, Nantou, Taiwan
1995 Design Award The Datai, Langkawi, Malaysia

Far Eastern Memorial Foundation, Taiwan

2003 Outstanding Architectural Design Award The Lalu, Nantou, Taiwan

FIABCI

2004 Prix d'Excellence Award, The Lalu, Nantou, Taiwan

Selected Publications

2008

The Phaidon Atlas of 21st Century World Architecture

ITC Sonar Bangla Hotel, Amankora Thimpu,
Amankora Gangtey, The Chedi Chiang Mai
Singapore Zoo Entrance

2006

Architecture Australia

RAIA Gold Medalist – Kerry Hill March/April 2006

2005

A + U Architecture and Urbanism

Garlick Avenue, Singapore
Soi 53 Apts, Bangkok, Thailand December 2005

A + U Architecture and Urbanism

The Lalu, Sun Moon Lake, Taiwan July 2005
Interview with Kerry Hill Special Issue

2004

The Phaidon Atlas of Contemporary World Architecture

Ogilvie House, Cluny Hill House
Singapore Cricket Association Pavilion

NEW BUILDING FOR THE FACULTY OF ARCHITECTURE,
BUILDING AND PLANNING, THE UNIVERSITY OF MELBOURNE



THE DATAI, Langkawi, Malaysia



OGILVIE HOUSE, Sunshine Coast



THE LALU, Nantou, Taiwan



ITC SONAR BANGLA, Kolkata



THE CHEDI, Chiang Mai, Thailand



BEAUREPAIRE CENTRE, Melbourne



IMMIGRATION MUSEUM, Melbourne



1888 BUILDING, Melbourne

Merit

LOVELL CHEN www.lovellchen.com.au

Awards

RAIA: National Awards

2004 Lachlan Macquarie Award Beaurepaire Centre
1994 Lachlan Macquarie Award ANZ Bank Project
(The Gothic Bank)

RAIA: State Awards

2006 Heritage Architecture Award St Kilda Pier Kiosk & Café
2006 John George Knight Award Beaurepaire Centre
2004 John George Knight Award Shrine of Remembrance
2002 John George Knight Award Royal Exhibition Bldg
2002 Commendation Harricks Homestead
1999 John George Knight Award Immigration Museum
1999 The Melbourne Prize Immigration Museum
1998 Commendation Government House, Perth, WA
1997 Merit Award Regent Theatre
1996 Commendation 1888 Building (School of Graduate Studies)
1996 Commendation Melbourne Town Hall
1991 Merit Award Hildebrand House, Somers
1990 Merit Award Wilson House, South Yarra
1989 Conservation Award The Hyatt Hotel, Canberra
1984 William Pitt Award Hotel Windsor, Melbourne
1984 Merit Award Parliament House, Victoria
1982 Merit Award Peel House, Rye
1982 President's Award Peel House, Rye
1982 Merit Award Former Denomination School, Maldon
1982 Merit Award Collingwood Town Hall
1982 Merit Award Windsor Hotel, Melbourne

Australian Council of National Trusts Awards

1990 Australian Heritage Award 380 Collins Street (The Gothic Bank)
1990 Australian Heritage Award Princess Theatre

City of Melbourne Building & Planning Awards

1995 Urban Conservation Award Royal Exhibition Bldg

The Illuminating Engineering Society of Australia (Victoria)

1994 High commendation Princess Theatre

Exhibitions

1991

Quinta Mostra Internazionale Di Architettura Venezia

Venice Biennale

Australian Pavilion

Vivid Images/Inspirational Sources

September – October 1991

